

Percussionist Specification



COMPOSITION

Construction	ISO2424	Tufted 1/12th Loop Pile
Pile Fibre	ISO2076	Antron Lumina 100% Solution Dyed Nylon
Primary Backing	ISO2424	Non-woven Polyester
Secondary Backing	ISO2424	Bitumen with glass fibre 3kg/m ²
Pile Height	ISO1766	2.5 mm ± 0.5mm
Total Height	ISO1765	6.0 mm ± 0.5mm
Pile Weight	ISO1958	650 gr/m ² ± 5%
Total Weight	ISO8543	4140 gr/m ² ± 10%
Pile Density	ISO1763	226,560 tufts/m ² ± 5%
Tile Size	EN994	50 x 50 cm
Tiles per Box		20 tiles per box (5m ²)

CLASSIFICATION

Flammability (Fire Spread EN13501)	ISO11925	Fs ≤ 150mm within 20 seconds
Flammability (Radiant Panel EN13501)	ISO9239	B _{fl} -S1
Flammability (Hot Metal Nut)	BS4790	Low radius effects of ignition
Wear Resistance (Castor Chair Test)	ISO4918	Pass ≥ 2.4 (A – Continuous Use)
Electrical Vertical Resistance	ISO10965	Pass ≤ 10 ⁹ Ω
Electrostatic Propensity (Stroll Test)	ISO6356	Pass <2.0kV
Slip Resistance	EN13893	DS
Dimensional Stability	EN986	Pass <0.2%
Acoustic Impact Noise Reduction	ISO717	22dB
Sound Absorption	ISO354	500Hz-0.07as, 1000Hz-0.20as, 2000Hz-0.28as, 4000Hz-0.30as
Colour Fastness – Light (CIELAB)	ISO105	≥6
Colour Fastness – Rubbing (CIELAB)	ISO105	≥5
Colour Fastness – Water (CIELAB)	ISO105	≥5
Classification for Use	ISO10874	Class 33 Commercial Heavy
Luxury Class Rating	EN1307	LC1

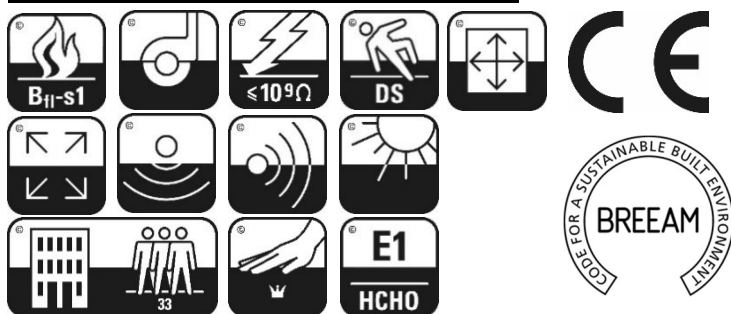
ENVIRONMENTAL

Formaldehyde Emission HCHO - E1
BREEAM A Rating

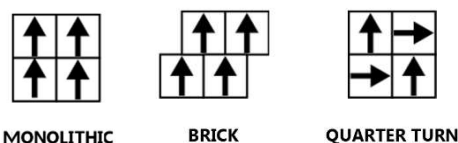
WARRANTY

10 Year Wear Warranty

CERTIFICATION



INSTALLATION



© The Floor Hub. Specifications are subject to normal manufacturing tolerances and may be changed without prior notice. Copies of actual test results are available on request.

The Floor Hub HQ & Trade Bar, No 3, 14 Greycaine Road, Watford, Herts. WD24 7GP
The Floor Hub Showroom, The Vault, 8-11 St John's Lane, Clerkenwell, London. EC1M 4BF
Tel: 01923 211151 Email: hello@thefloorhub.co.uk
www.thefloorhub.co.uk

© The Floor Hub. Specifications are subject to normal manufacturing tolerances and may be changed without prior notice. Copies of actual test results are available on request.

The Floor Hub HQ & Trade Bar, No 3, 14 Greycaine Road, Watford, Herts. WD24 7GP
The Floor Hub Showroom, The Vault, 8-11 St John's Lane, Clerkenwell, London. EC1M 4BF
Tel: 01923 211151 Email: hello@thefloorhub.co.uk
www.thefloorhub.co.uk