

Lattice Specification



COMPOSITION

| | | |
|-------------------|---------|---|
| Construction | ISO2424 | Tufted 1/12th Loop Pile |
| Pile Fibre | ISO2076 | Antron Lumina 100% Solution Dyed Nylon |
| Primary Backing | ISO2424 | Non-woven Polyester |
| Secondary Backing | ISO2424 | Bitumen with glass fibre 3kg/m ² |
| Pile Height | ISO1766 | 2.5 mm ± 0.5mm |
| Total Height | ISO1765 | 6.0 mm ± 0.5mm |
| Pile Weight | ISO1958 | 650 gr/m ² ± 5% |
| Total Weight | ISO8543 | 4140 gr/m ² ± 10% |
| Pile Density | ISO1763 | 226,560 tufts/m ² ± 5% |
| Tile Size | EN994 | 50 x 50 cm |
| Tiles per Box | | 20 tiles per box (5m ²) |

CLASSIFICATION

| | | |
|--|----------|--|
| Flammability (Fire Spread EN13501) | ISO11925 | Fs ≤ 150mm within 20 seconds |
| Flammability (Radiant Panel EN13501) | ISO9239 | B _{fl} -S1 |
| Flammability (Hot Metal Nut) | BS4790 | Low radius effects of ignition |
| Wear Resistance (Castor Chair Test) | ISO4918 | Pass ≥ 2.4 (A – Continuous Use) |
| Electrical Vertical Resistance | ISO10965 | Pass ≤ 10 ⁹ Ω |
| Electrostatic Propensity (Stroll Test) | ISO6356 | Pass <2.0kV |
| Slip Resistance | EN13893 | DS |
| Dimensional Stability | EN986 | Pass <0.2% |
| Acoustic Impact Noise Reduction | ISO717 | 22dB |
| Sound Absorption | ISO354 | 500Hz-0.07as, 1000Hz-0.20as, 2000Hz-0.28as, 4000Hz-0.30as |
| Colour Fastness – Light (CIELAB) | ISO105 | ≥6 |
| Colour Fastness – Rubbing (CIELAB) | ISO105 | ≥5 |
| Colour Fastness – Water (CIELAB) | ISO105 | ≥5 |
| Classification for Use | ISO10874 | Class 33 Commercial Heavy |
| Luxury Class Rating | EN1307 | LC1 |

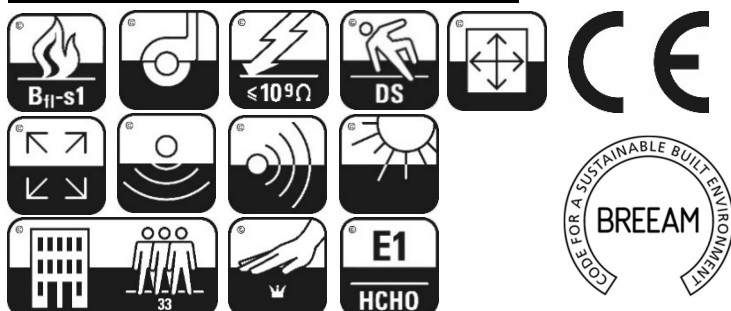
ENVIRONMENTAL

Formaldehyde Emission HCHO - E1
BREEAM A Rating

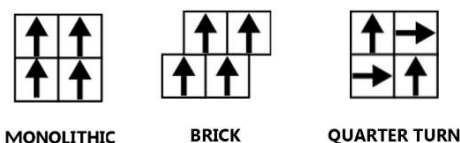
WARRANTY

10 Year Wear Warranty

CERTIFICATION



INSTALLATION



© The Floor Hub. Specifications are subject to normal manufacturing tolerances and may be changed without prior notice. Copies of actual test results are available on request.

The Floor Hub HQ & Trade Bar, No 3, 14 Greycaine Road, Watford, Herts. WD24 7GP
The Floor Hub Showroom, The Vault, 8-11 St John's Lane, Clerkenwell, London. EC1M 4BF
Tel: 01923 211151 Email: hello@thefloorhub.co.uk
www.thefloorhub.co.uk